

NEWEL

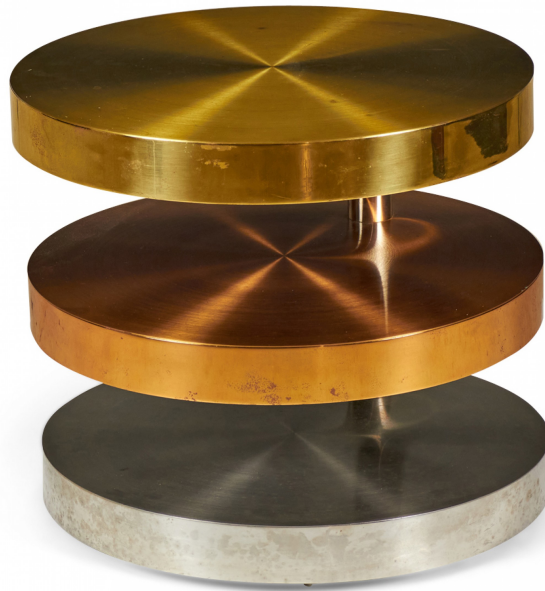
EST 1939

306 EAST 61ST STREET, 3RD FL

NEW YORK, NY 10065

(212)758-1970

sales@newel.com | NEWEL.COM



INVENTORY #

DUF0044

SALE PRICE

\$9,250.00

LORIN MARSH

Lorin Marsh American High Style Mixed Metals, Rolling, Swiveling Cocktail / Coffee Table

American High Style (circa 1980) coffee / cocktail table comprised of three swiveling circular tiers made from polished and satin brass, copper and chrome plated steel resting on rolling casters.

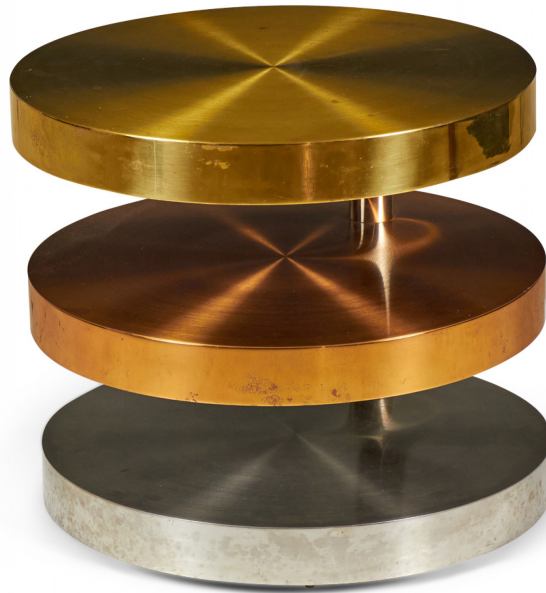
DIMENSIONS W:34"D:22"H:19.75"

CONDITION Good; Wear consistent with age and use

LOCATION LIC-Showroom



SKU : #DUF0044



INVENTORY #

DUF0044

SALE PRICE

\$9,250.00

LORIN MARSH

Lorin Marsh American High Style Mixed Metals, Rolling, Swiveling Cocktail / Coffee Table

American High Style (circa 1980) coffee / cocktail table comprised of three swiveling circular tiers made from polished and satin brass, copper and chrome plated steel resting on rolling casters.

DIMENSIONS W:34"D:22"H:19.75"

CONDITION Good; Wear consistent with age and use

LOCATION LIC-Showroom



SKU : #DUF0044



INVENTORY #

DUF0044

SALE PRICE

\$9,250.00

LORIN MARSH

Lorin Marsh American High Style Mixed Metals, Rolling, Swiveling Cocktail / Coffee Table

American High Style (circa 1980) coffee / cocktail table comprised of three swiveling circular tiers made from polished and satin brass, copper and chrome plated steel resting on rolling casters.

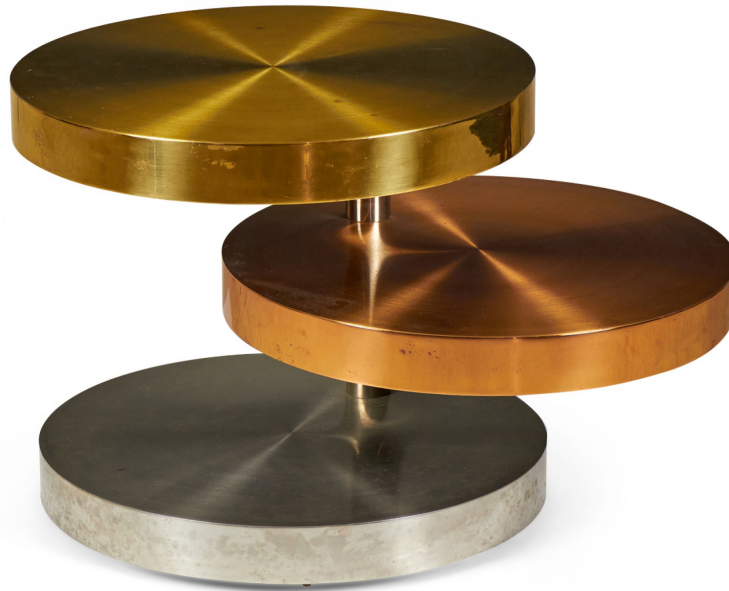
DIMENSIONS W:34"D:22"H:19.75"

CONDITION Good; Wear consistent with age and use

LOCATION LIC-Showroom



SKU : #DUF0044



INVENTORY #

DUF0044

SALE PRICE

\$9,250.00

LORIN MARSH

Lorin Marsh American High Style Mixed Metals, Rolling, Swiveling Cocktail / Coffee Table

American High Style (circa 1980) coffee / cocktail table comprised of three swiveling circular tiers made from polished and satin brass, copper and chrome plated steel resting on rolling casters.

DIMENSIONS W:34"D:22"H:19.75"

CONDITION Good; Wear consistent with age and use

LOCATION LIC-Showroom



SKU : #DUF0044



INVENTORY #

DUF0044

SALE PRICE

\$9,250.00

LORIN MARSH

Lorin Marsh American High Style Mixed Metals, Rolling, Swiveling Cocktail / Coffee Table

American High Style (circa 1980) coffee / cocktail table comprised of three swiveling circular tiers made from polished and satin brass, copper and chrome plated steel resting on rolling casters.

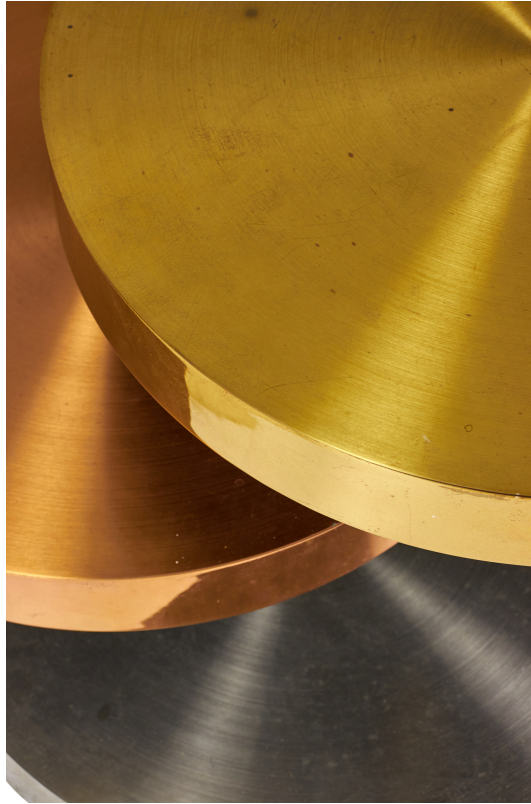
DIMENSIONS W:34"D:22"H:19.75"

CONDITION Good; Wear consistent with age and use

LOCATION LIC-Showroom



SKU : #DUF0044



INVENTORY #

DUF0044

SALE PRICE

\$9,250.00

LORIN MARSH

Lorin Marsh American High Style Mixed Metals, Rolling, Swiveling Cocktail / Coffee Table

American High Style (circa 1980) coffee / cocktail table comprised of three swiveling circular tiers made from polished and satin brass, copper and chrome plated steel resting on rolling casters.

DIMENSIONS W:34"D:22"H:19.75"

CONDITION Good; Wear consistent with age and use

LOCATION LIC-Showroom



SKU : #DUF0044