

# NEWEL

EST 1939

306 EAST 61ST STREET, 3RD FL

NEW YORK, NY 10065

(212)758-1970

[sales@newel.com](mailto:sales@newel.com) | [NEWEL.COM](http://NEWEL.COM)



INVENTORY #

062836

## American Victorian Clear and Milk Glass Table Lamp

American Victorian glass table lamp comprised of a shaped clear glass base with decorative circular white pattern with threaded brass hardware and a clear hurricane shade beneath a larger ribbed milk glass shade (now wire for electricity).

DIMENSIONS H:20"

LOCATION LIC-2nd Floor



SKU : #062836



INVENTORY #

062836

---

### American Victorian Clear and Milk Glass Table Lamp

American Victorian glass table lamp comprised of a shaped clear glass base with decorative circular white pattern with threaded brass hardware and a clear hurricane shade beneath a larger ribbed milk glass shade (now wire for electricity).

---

DIMENSIONS      H:20"

LOCATION          LIC-2nd Floor



SKU : #062836



INVENTORY #

062836

### American Victorian Clear and Milk Glass Table Lamp

American Victorian glass table lamp comprised of a shaped clear glass base with decorative circular white pattern with threaded brass hardware and a clear hurricane shade beneath a larger ribbed milk glass shade (now wire for electricity).

DIMENSIONS H:20"

LOCATION LIC-2nd Floor



SKU : #062836



INVENTORY #

062836

---

### American Victorian Clear and Milk Glass Table Lamp

American Victorian glass table lamp comprised of a shaped clear glass base with decorative circular white pattern with threaded brass hardware and a clear hurricane shade beneath a larger ribbed milk glass shade (now wire for electricity).

---

DIMENSIONS      H:20"

LOCATION          LIC-2nd Floor



SKU : #062836

# NEWEL

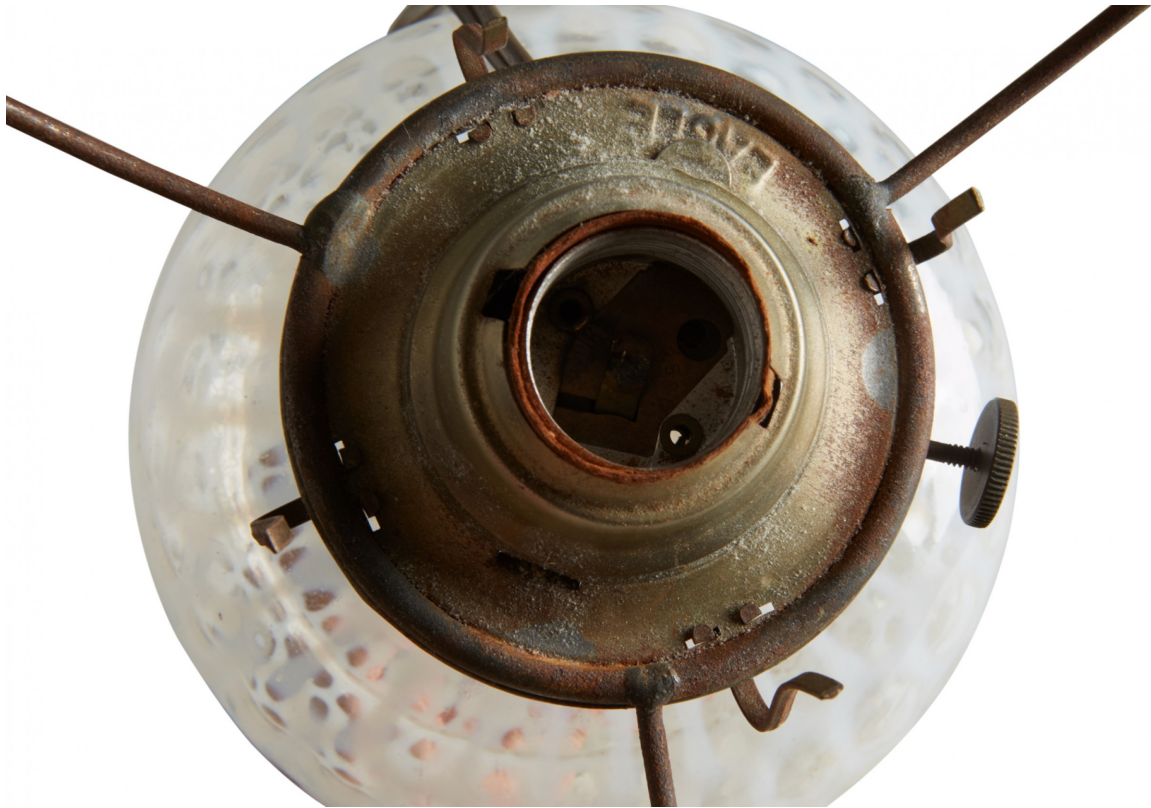
EST 1939

306 EAST 61ST STREET, 3RD FL

NEW YORK, NY 10065

(212)758-1970

[sales@newel.com](mailto:sales@newel.com) | [NEWEL.COM](http://NEWEL.COM)



INVENTORY #

062836

## American Victorian Clear and Milk Glass Table Lamp

American Victorian glass table lamp comprised of a shaped clear glass base with decorative circular white pattern with threaded brass hardware and a clear hurricane shade beneath a larger ribbed milk glass shade (now wire for electricity).

DIMENSIONS H:20"

LOCATION LIC-2nd Floor



SKU : #062836